

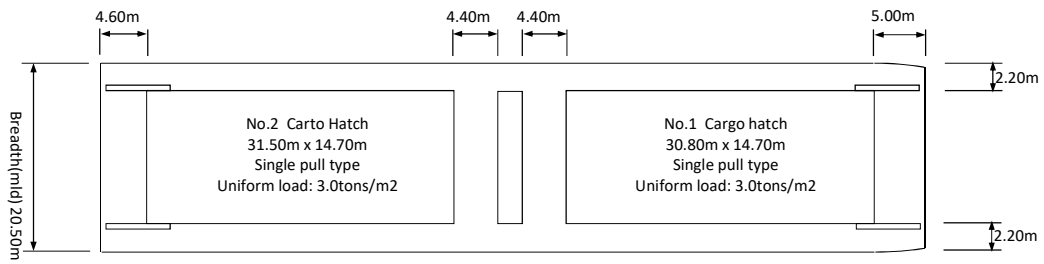
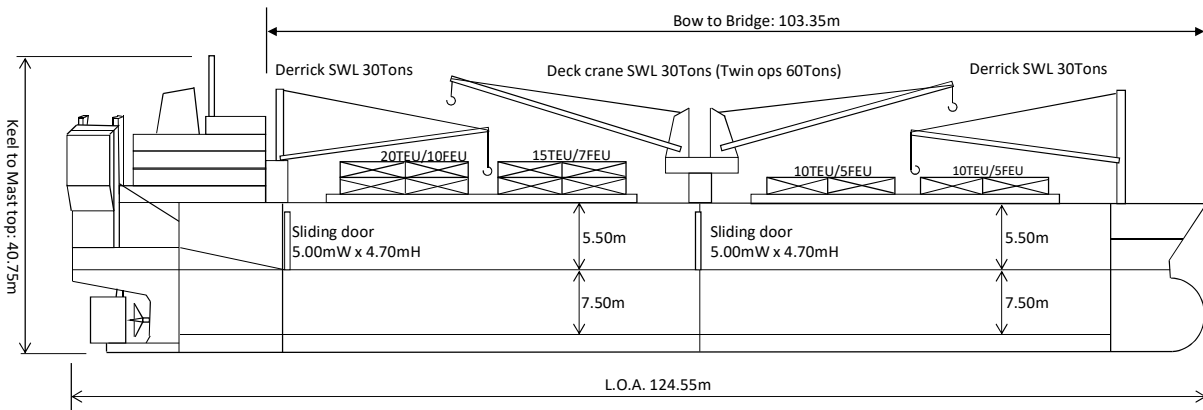
SHIP'S PARTICULARS

Ship's name	ULTRA EUROPE
Owner	MARIX LINE PTE LTD
Built	December 2009
Builder	Kegoya dock Co., Ltd.
Hull No.	1120
Flag	Singapore
Port of Reg	Singapore
Call sign	9V8319
Official No.	395609
IMO No.	9523562
Class / Class No.	Nippon Kaiji Kyokai / NK NS* (BC-XII, EQ C V & DG) MNS* / 095573
International Gross Tonnage	9,981 tons
Net Tonnage	4,573 tons
Dead Weight	13,325.426 tons
Loa	124.55 m
Lbp	115.00 m
B (md)	20.50 m
D (md)	14.50 m
Scantling draft (md)	9.00 m
Keel to Mast top	40.75 m
Bow to Bridge	103.35 m
Main engine	Hanshin B&W 6S35MC
- Maximum continuous output (MCO)	4,200 kw (5,700 ps) x 170 rpm
- Continuous service output (CSO)	3,570 kw (4,845 ps) x 161 rpm
- Fuel / Consumption (tons/day)	380cSt / about 15.6tons at CSO (+380cSt about 1.4tons for G/E)
Ship's Speed	about 12.7 knots at CSO with full loaded condition
Cargo capacity (Grain / Bale)	21,907.90 m3 / 20,514.98 m3
Cargo capacity (Container)	on hatch 55 TEU / 27 FEU (Reefer container 18 TEU)
Fuel oil tank capacity	745.32 m3 (100% full)
Diesel oil tank capacity	150.5 m3 (100% full)
Thruster	Nil
Derrick	Guyless type derrick boom SWL 30 tons x 2
Deck crane	Electro-hydraulic twin type SWL 30 tons x 2 (dual 60 tons)
Ramp way	SWL 55 tons x 1 (starboard aft)
- Width / Shell opening	5.00m in clear width / 4.70m(H) x 5.00m(W)
- Keel to main hinge	11 m
- Max allowable quay height fm water level	about 4 m
Hatch cover (Upper deck)	Single pull No.1 hold 30.80 x 14.70m No.2 hold 31.50 x 14.70m
Hatch cover (2nd deck)	Steel pontoon No.1 hold 30.80 x 14.00m No.2 hold 31.50 x 14.0m
Deck strength (on Tank top)	11.7 tons/m2
Deck strength (on 2nd deck)	3.5 tons/m2
Deck strength (on Upper deck)	3.0 tons/m2
Deck strength (on Hatch cover)	3.0 tons/m2

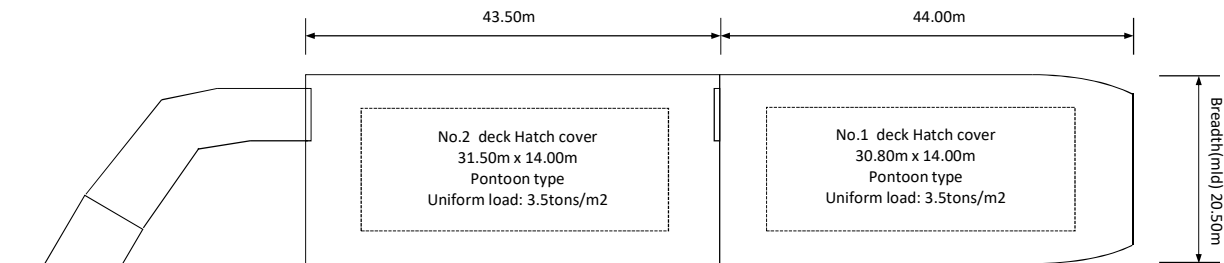
* details all about

Marix Line Pte Ltd

M/V "ULTRA EUROPE"

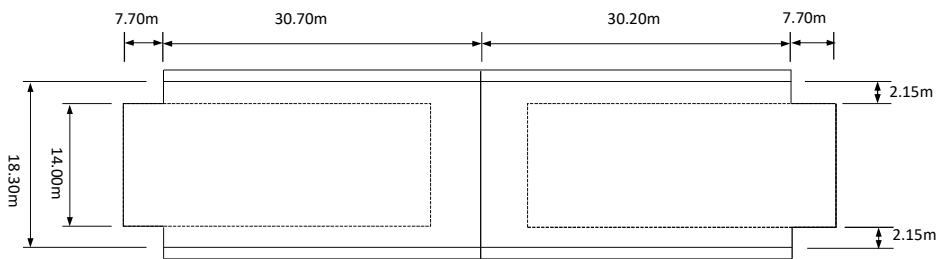


Upper deck/On hatch - Uniform load: 3.0tons/m²



2nd deck - Uniform load: 3.5tons/m²

Ramp door
25.00mL x 5.00mW x 4.70mH (Clear height of slopeway 4.30m)
SWL 55.00Tons



Tank top deck - Uniform load: 11.7Tons/m²

Cargo Capacity:
Grain 21,907.90 m³
Bale 20,514.98 m³
Container on hatch 60 TEU (Reefer 18TEU)

M/V "ULTRA EUROPE"

